

AVAILABLE FOR SALE

24.57 ACRES OF LAND

2303 Lees Chapel Road, Greensboro, NC 27405

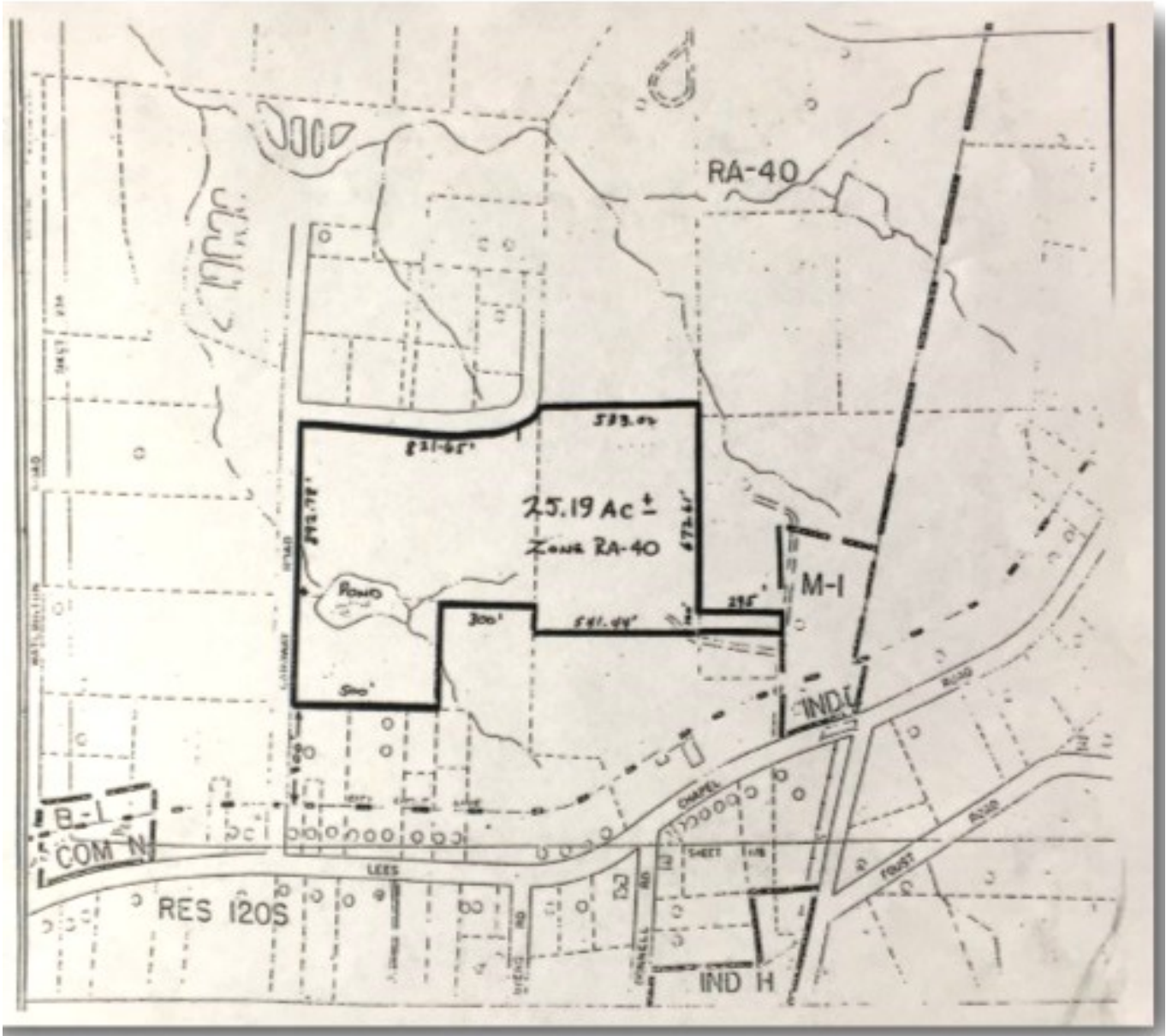


HIGHLIGHTS:

- 24.57 acre lot of land at 2303 Lees Chapel Road, Greensboro, NC 27405
- Located in Guilford County.
- Property features a great fishing pond.
- Gently rolling topography.
- Great for single family or multifamily housing.
- Zoning: RS-40
- Utilities: City

24.57 ACRES OF LAND

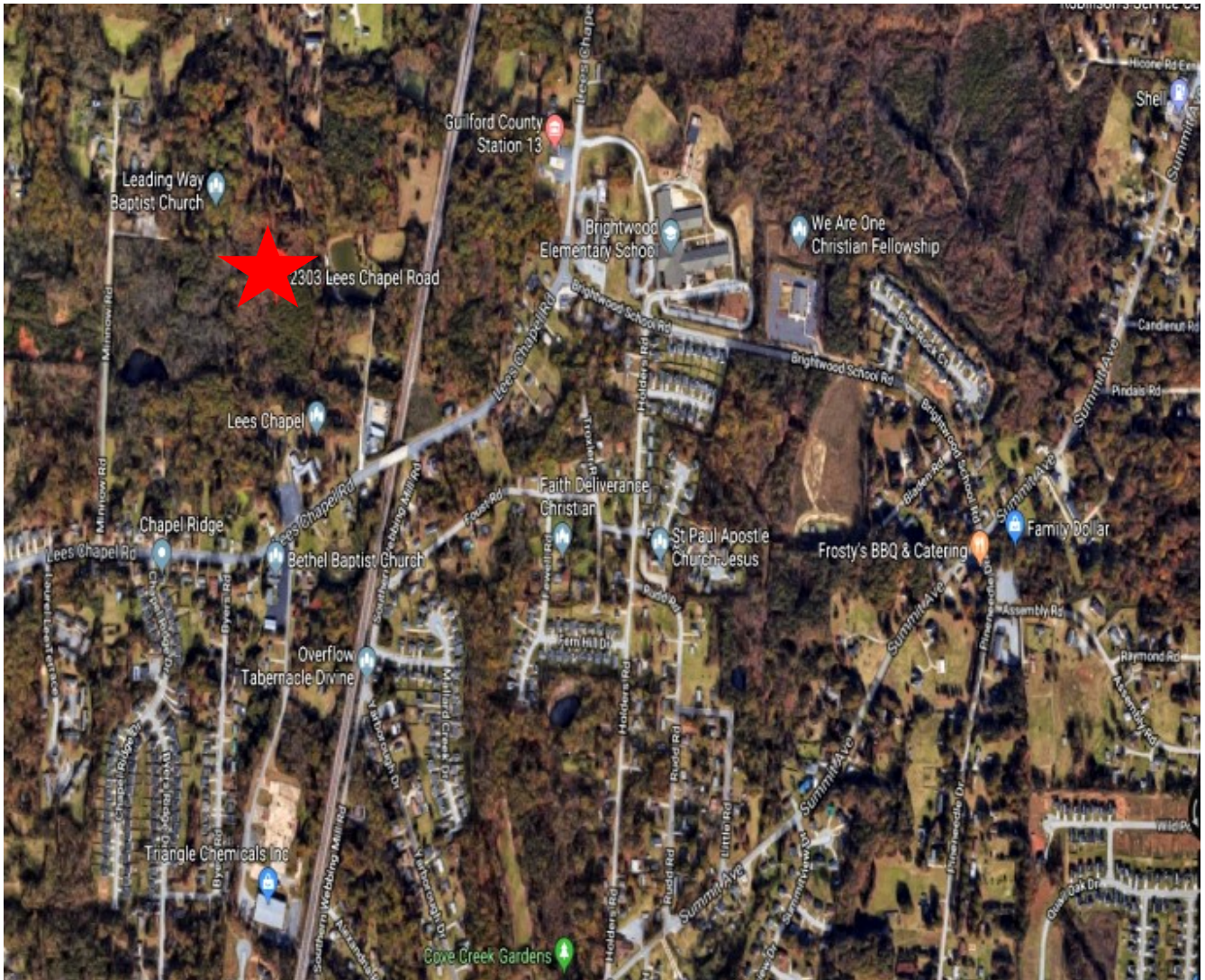
2303 Lees Chapel Road, Greensboro, NC 27405



SITE PLAN

24.57 ACRES OF LAND

2303 Lees Chapel Road, Greensboro, NC 27405



NEARBY

This property is conveniently located less than 2.5 miles for North Elm Village Shopping Center that houses Harris Teeter grocery store, Panera Bread, Chick-fil-A, Duck Donuts, as well as several retail shops. The closest school is Brightwood Elementary School which is less than a mile away. 2303 Lees Chapel Rd is also near VF Headquarters, Bryan Park and Peeler Center Park.